

# Successful Antegrade Percutaneous Coronary Intervention to Right Coronary Artery In-stent Restenosis Chronic Total Occlusion Complicated with Partial Stent Dislodgement

Dr Lee Zhen-Vin  
Clinical Specialist  
Cardiology Unit  
Department of Medicine  
University Malaya Medical Centre  
Malaysia

# Disclosures

- No conflict of interest

# Introduction

- A 75-year-old man with underlying hypertension, dyslipidaemia and coronary artery disease was admitted electively for percutaneous coronary intervention (PCI) to right coronary artery (RCA) in-stent restenosis chronic total occlusion (CTO).
- Patient underwent primary PCI to RCA 16 years ago and underwent PCI to left circumflex (LCx) artery 1 month ago.

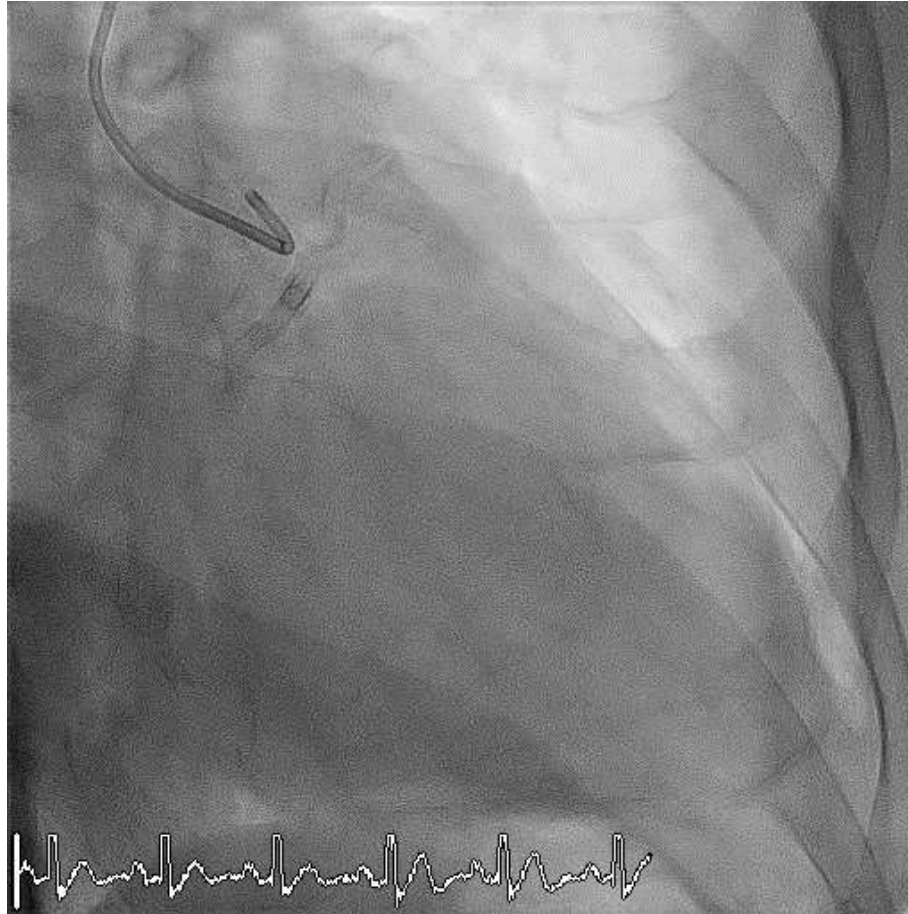
# Introduction

- Echocardiography 6 weeks prior revealed left ventricular ejection fraction of 43% with multiple areas of left ventricular wall hypokinesia. There were otherwise no significant valvular abnormalities.

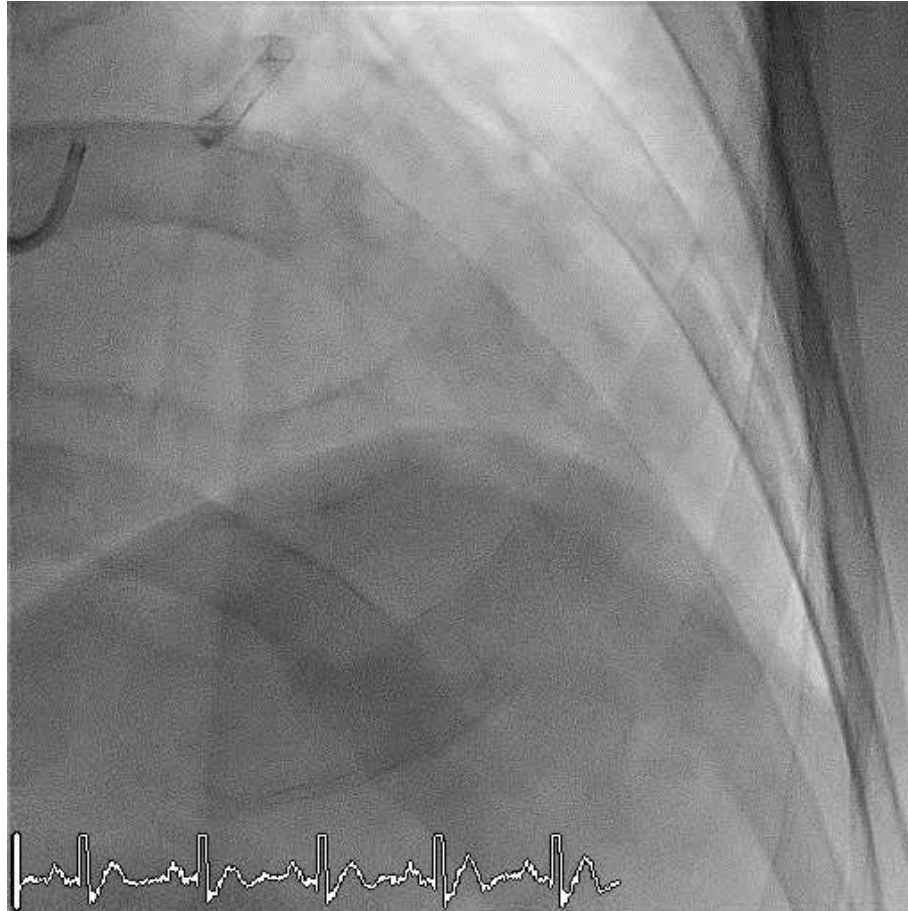
# PCI

- Both the right radial and right femoral access were used to facilitate dual injection.
- The RCA was engaged with a 6 French AL 0.75 guiding catheter with side holes whilst the left main coronary artery (LMCA) was engaged with a 5 French JL 3.5 diagnostic catheter.

# Coronary angiography



# Coronary angiography



# Coronary angiography

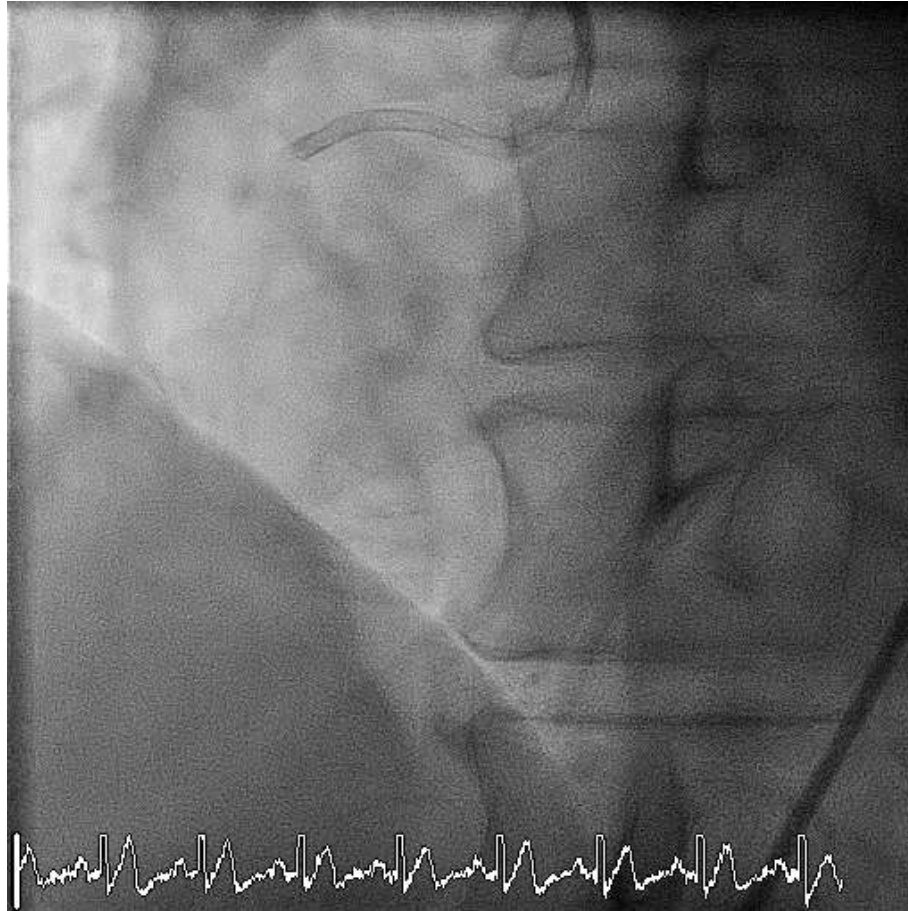
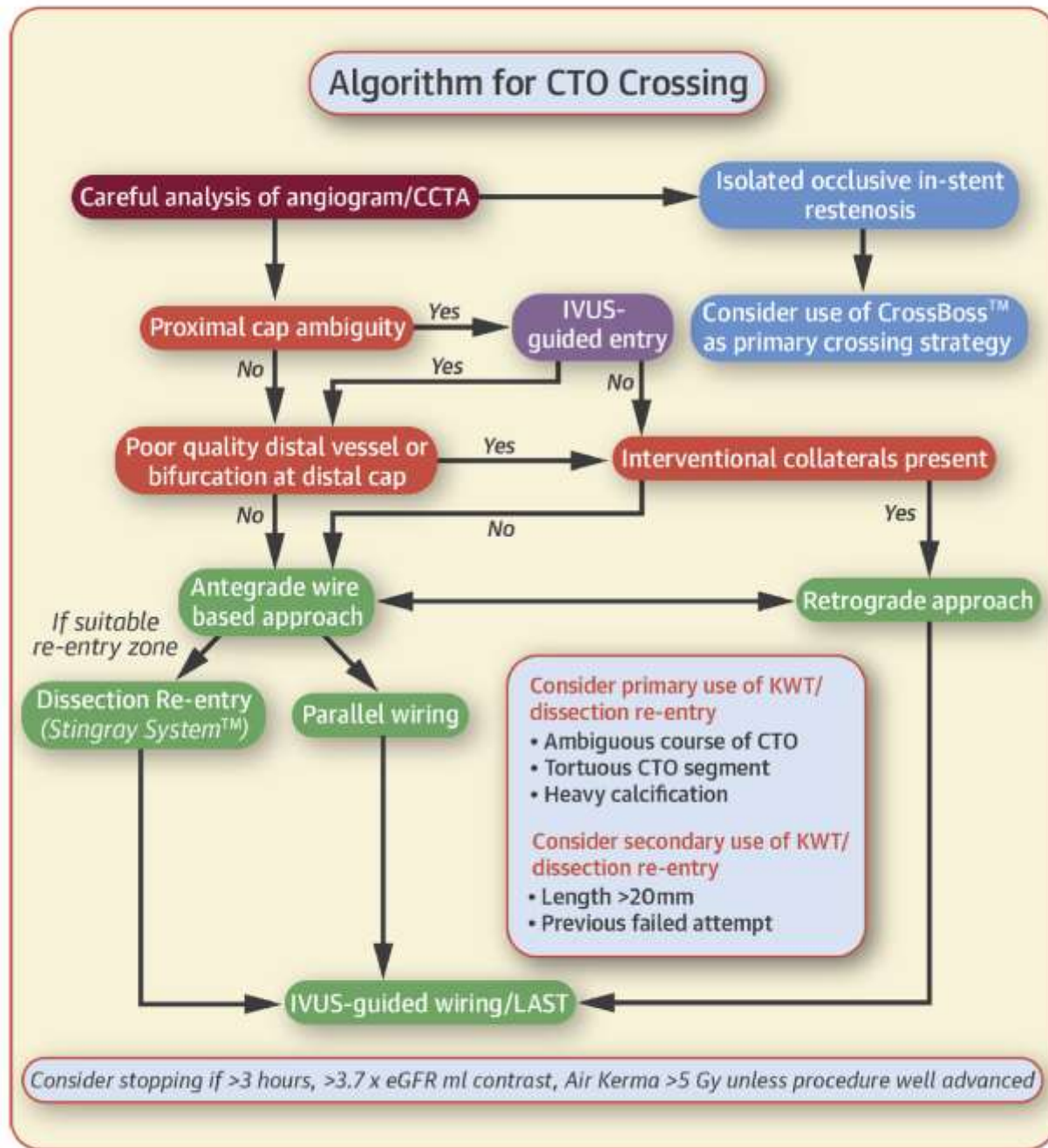


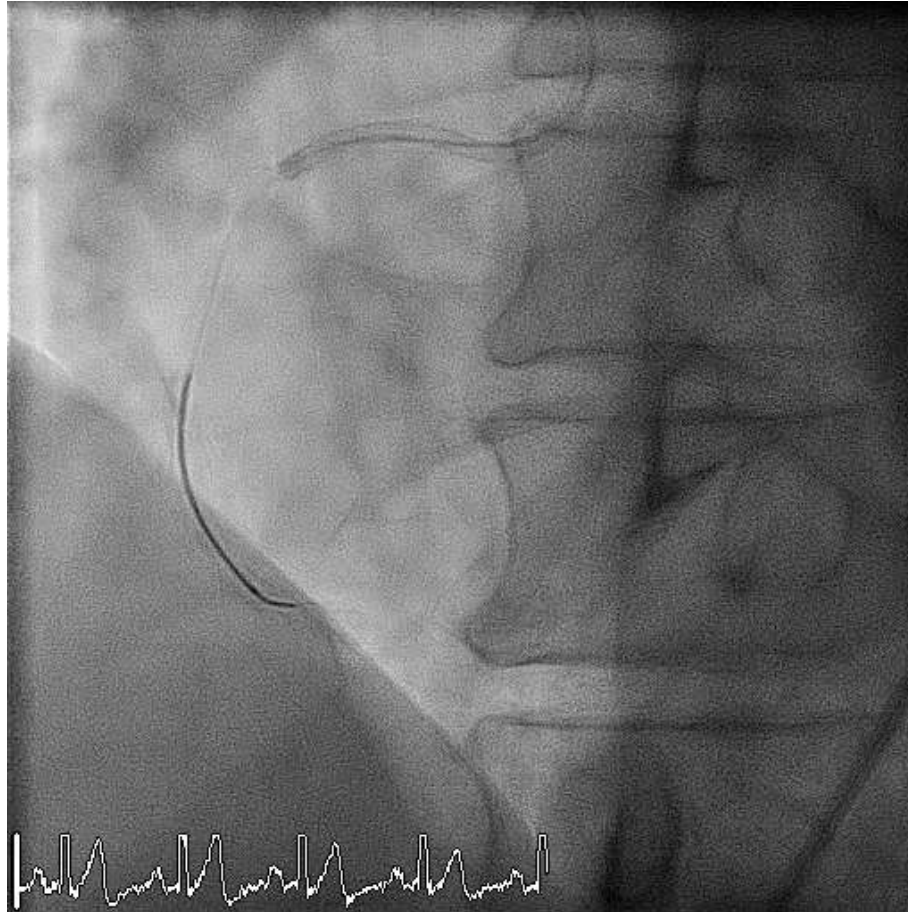


FIGURE 2 The Main Algorithm for CTO Crossing

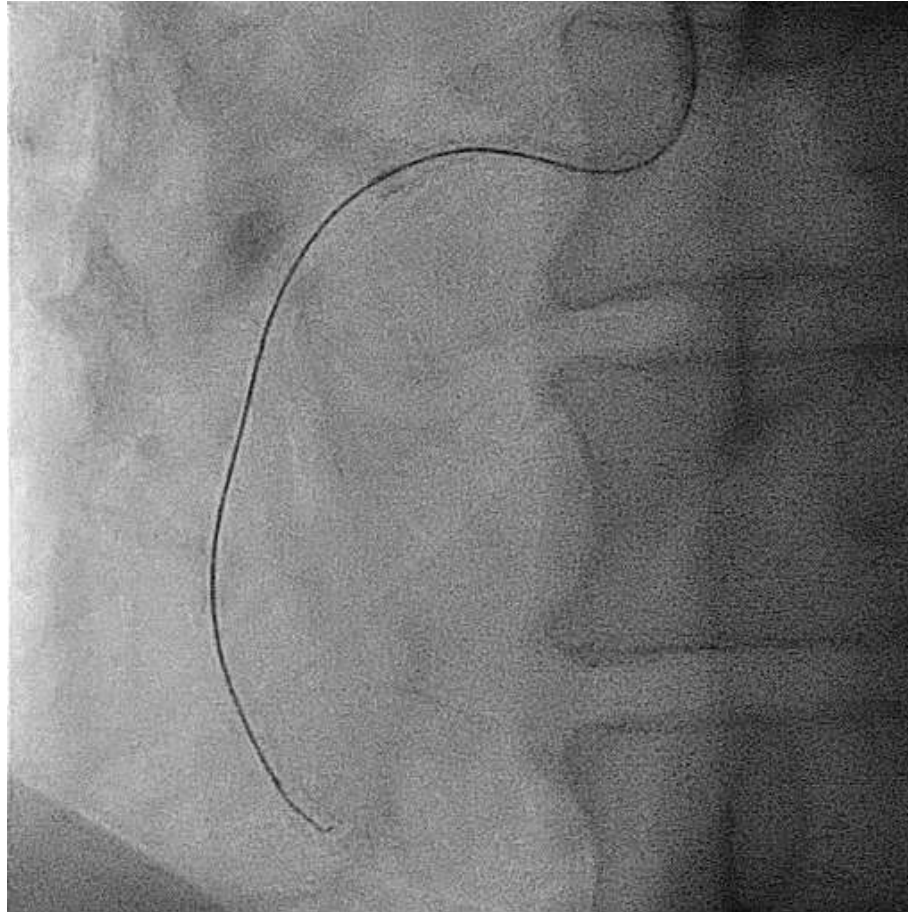


Harding SA, Wu EB, Lo S, et al. A new algorithm for crossing chronic total occlusions from the Asia Pacific Chronic Total Occlusion Club. J Am Coll Cardiol Intv 2017;10:2135–43.

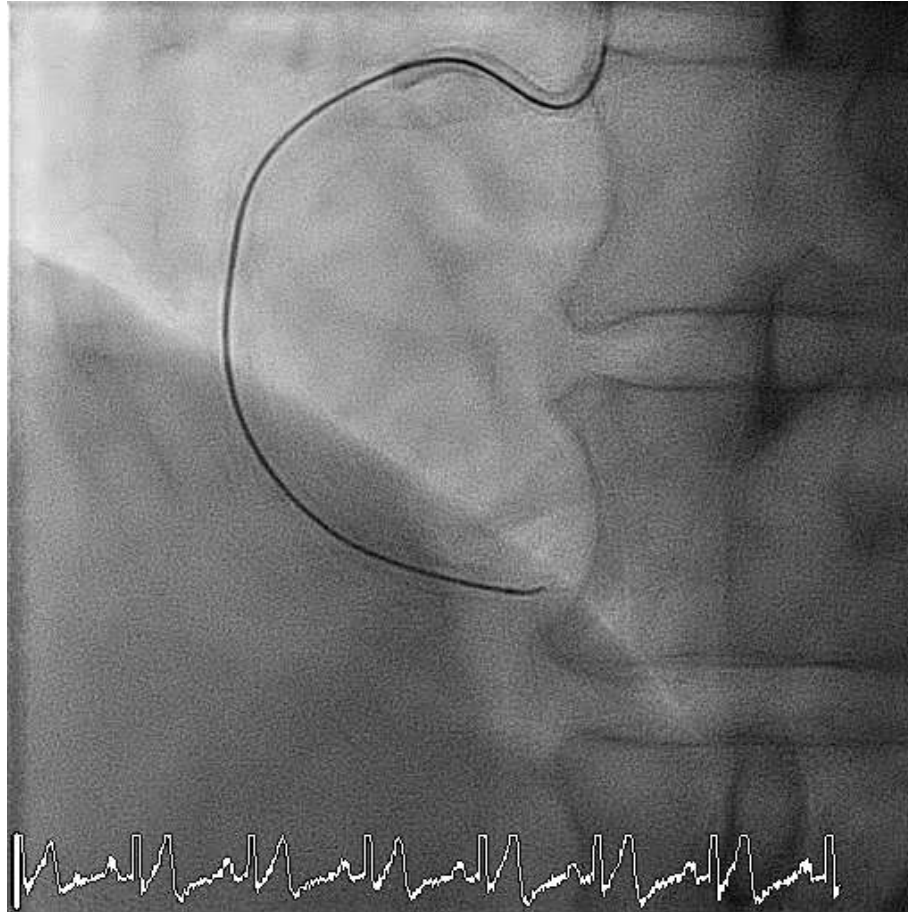
# Antegrade wire escalation



# Antegrade wire escalation

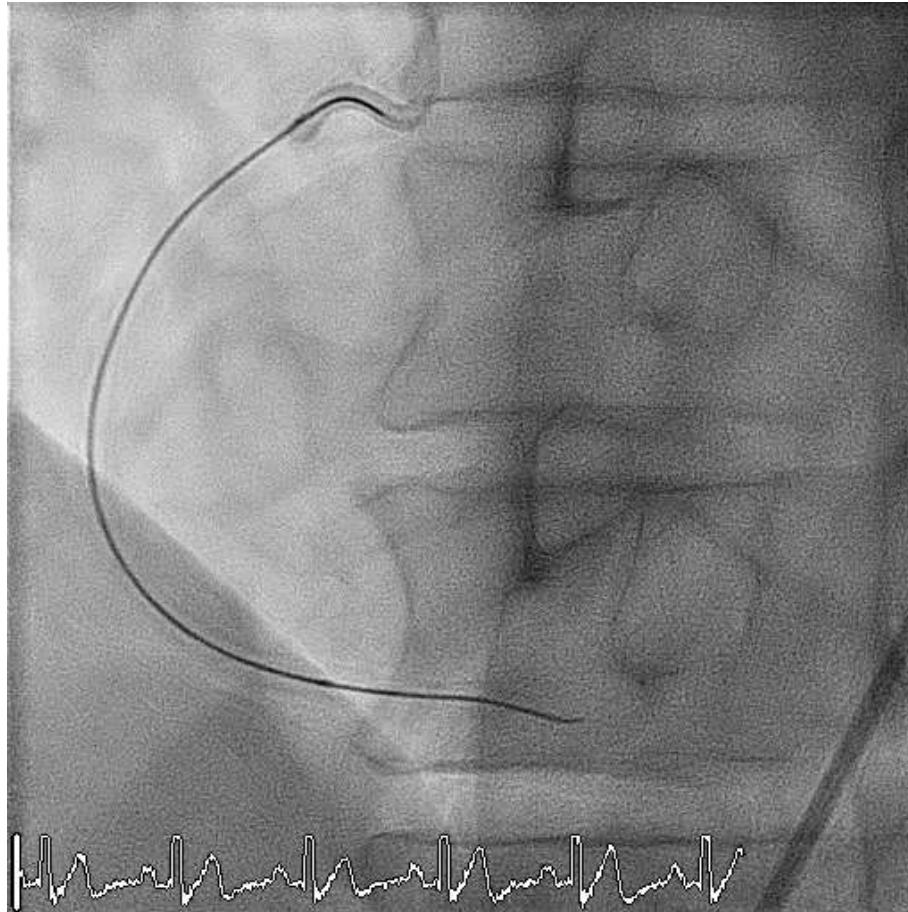


# Antegrade wire escalation

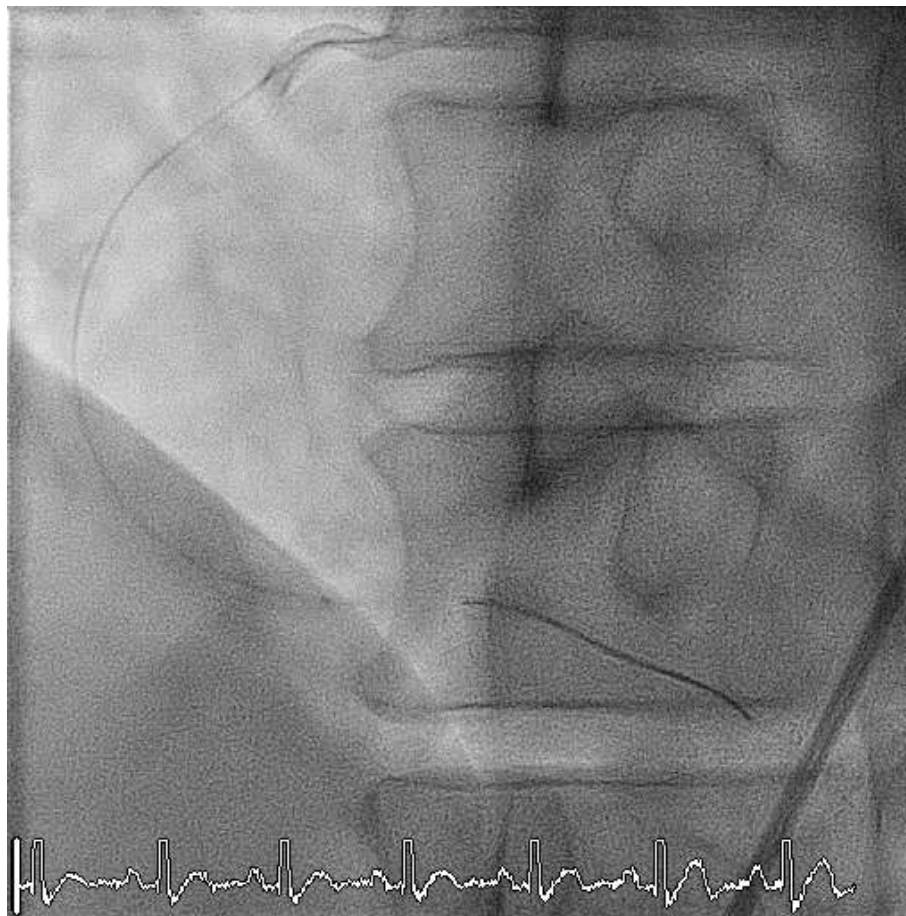




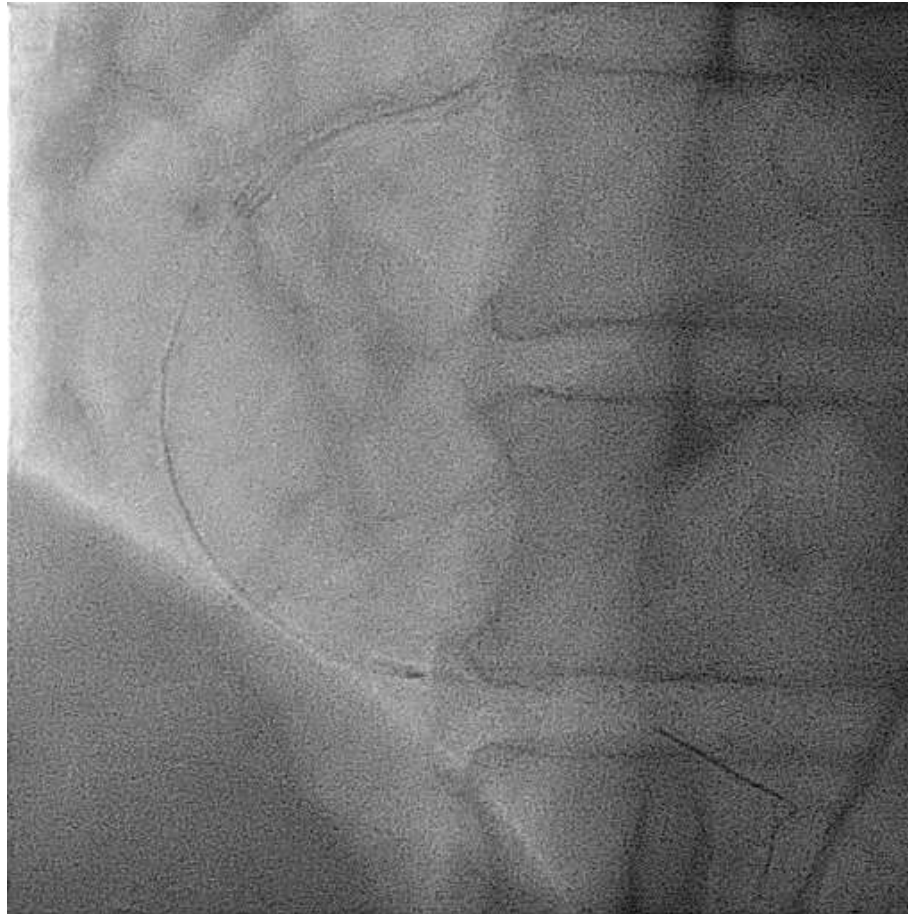
# Antegrade wire escalation



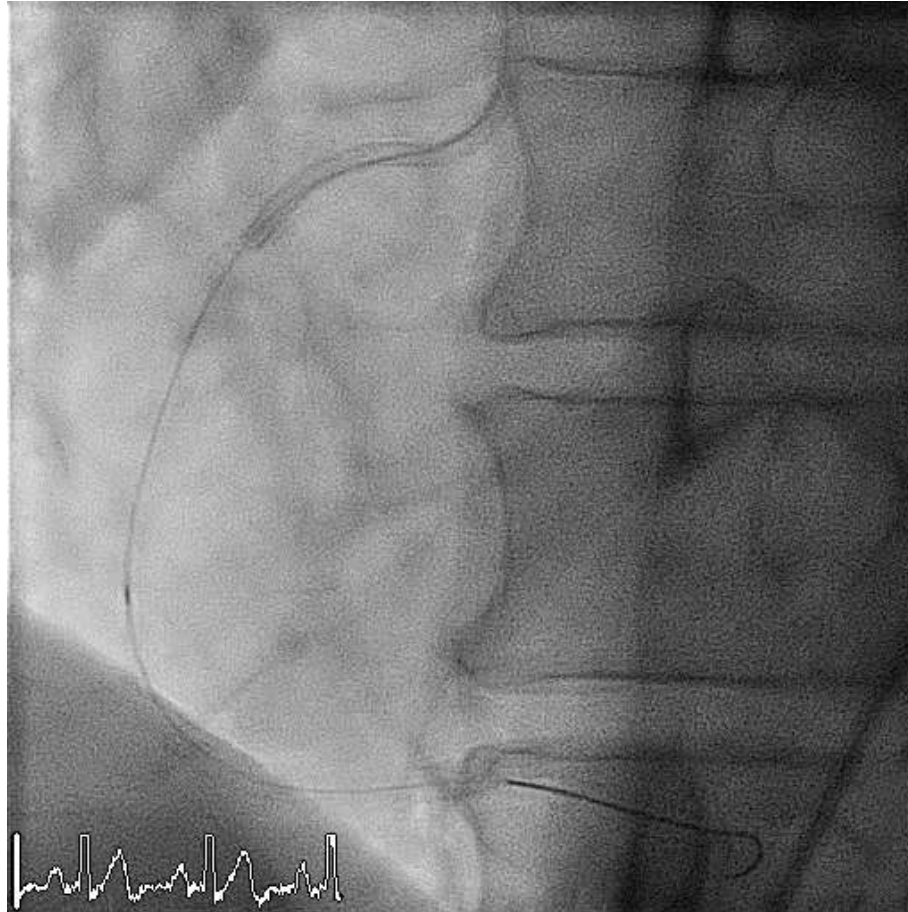
# Guidewire exchange



# Balloon-dottering

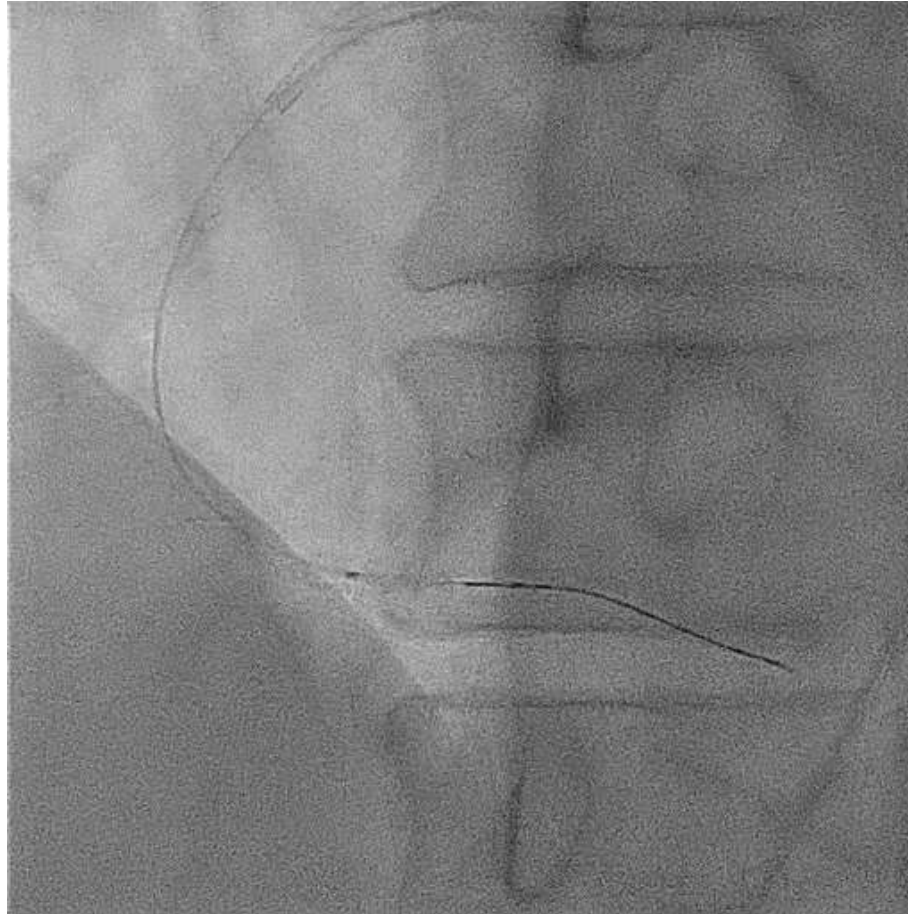


# Balloon-dottering

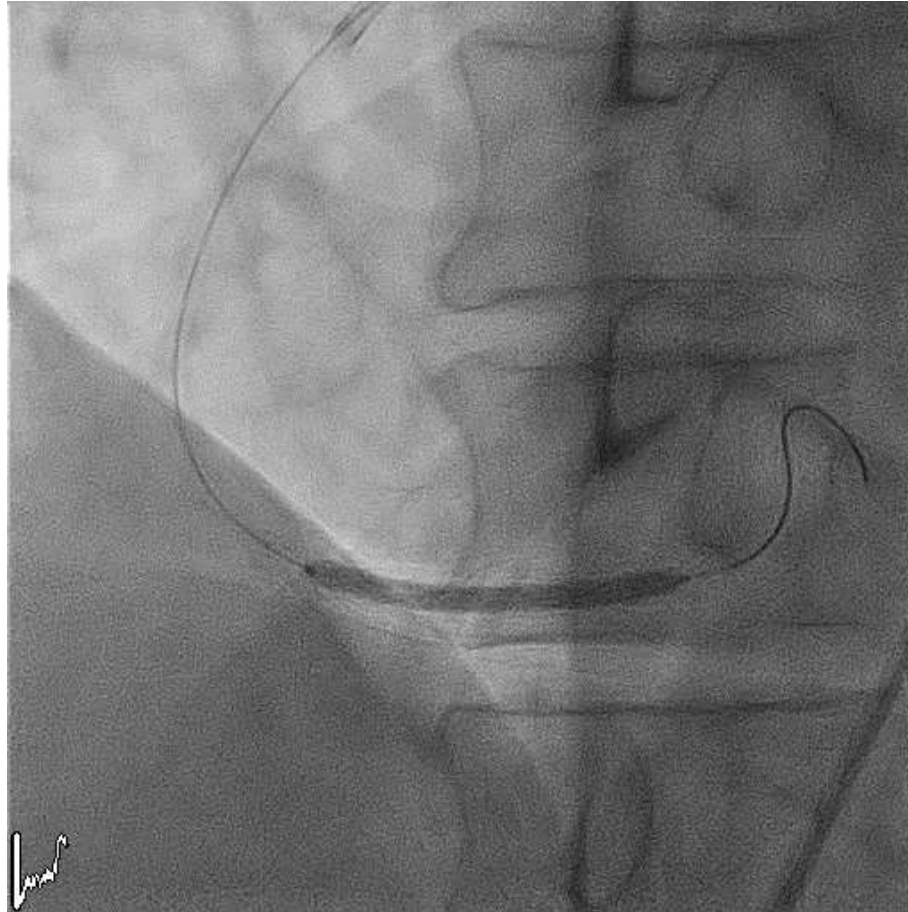




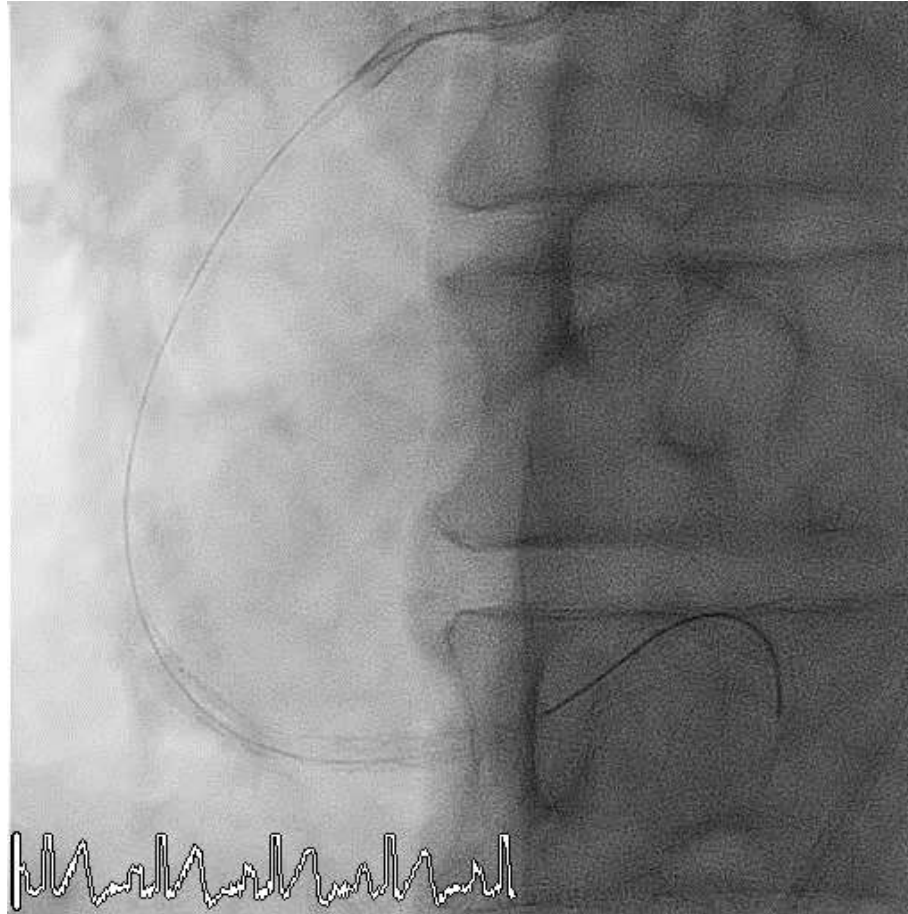
# Pre-dilatation



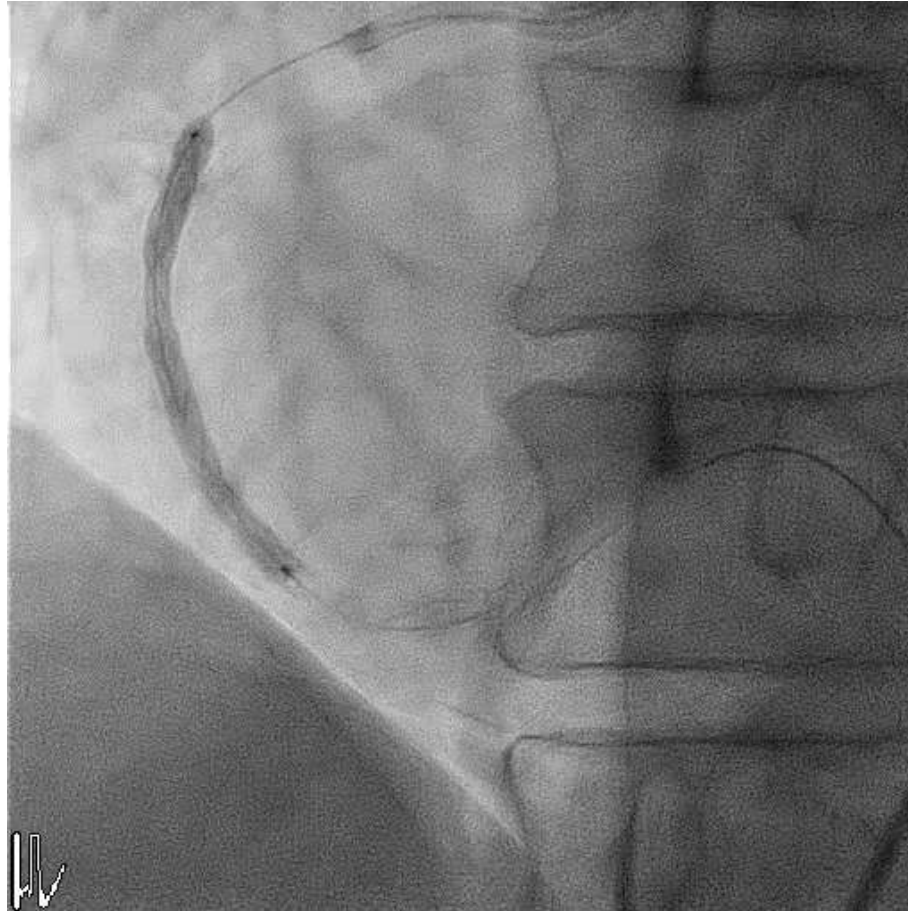
# Coronary stenting



# Coronary stenting

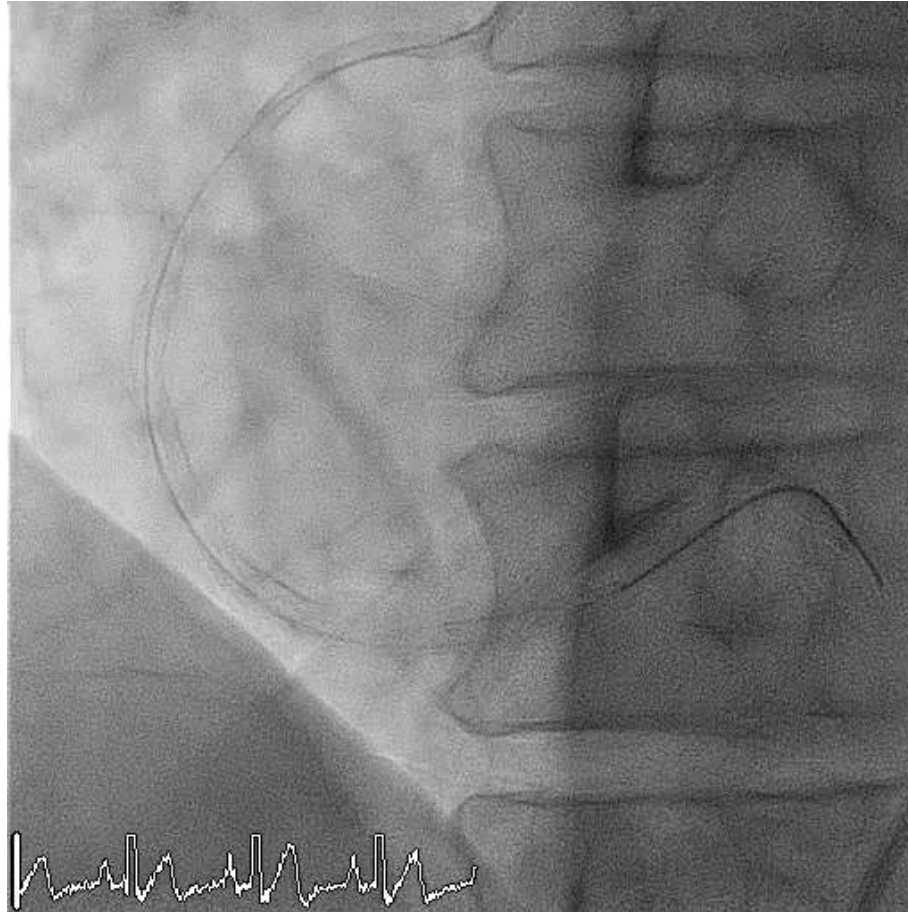


# Coronary stenting

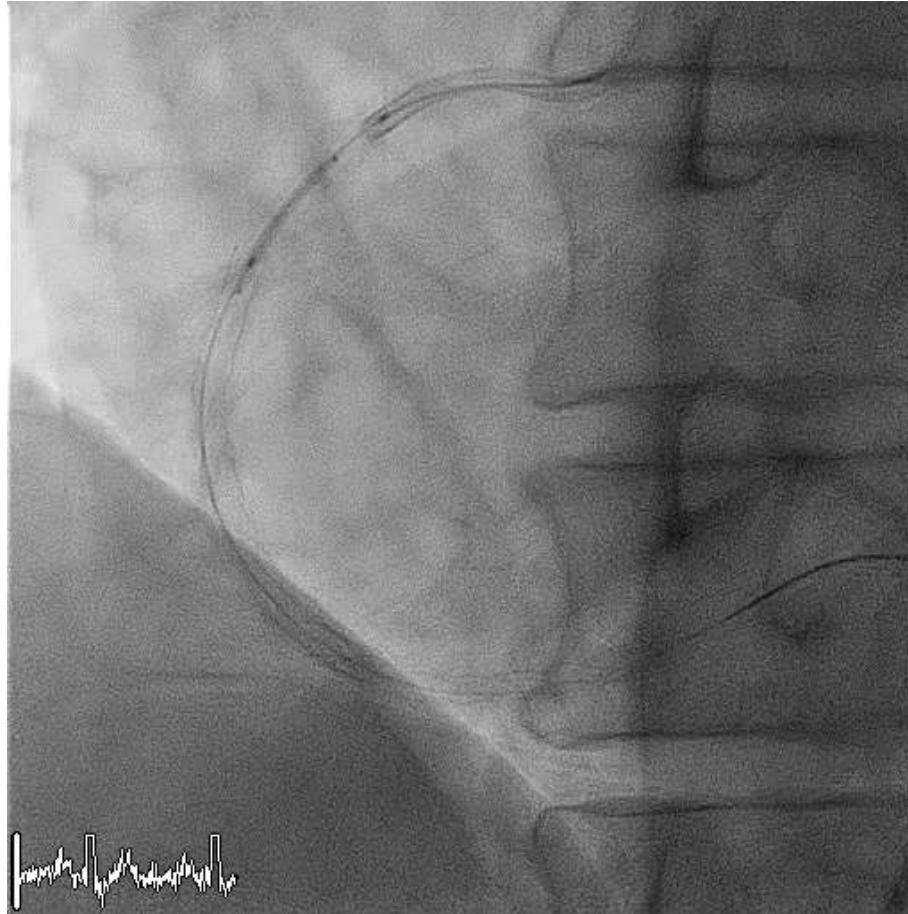




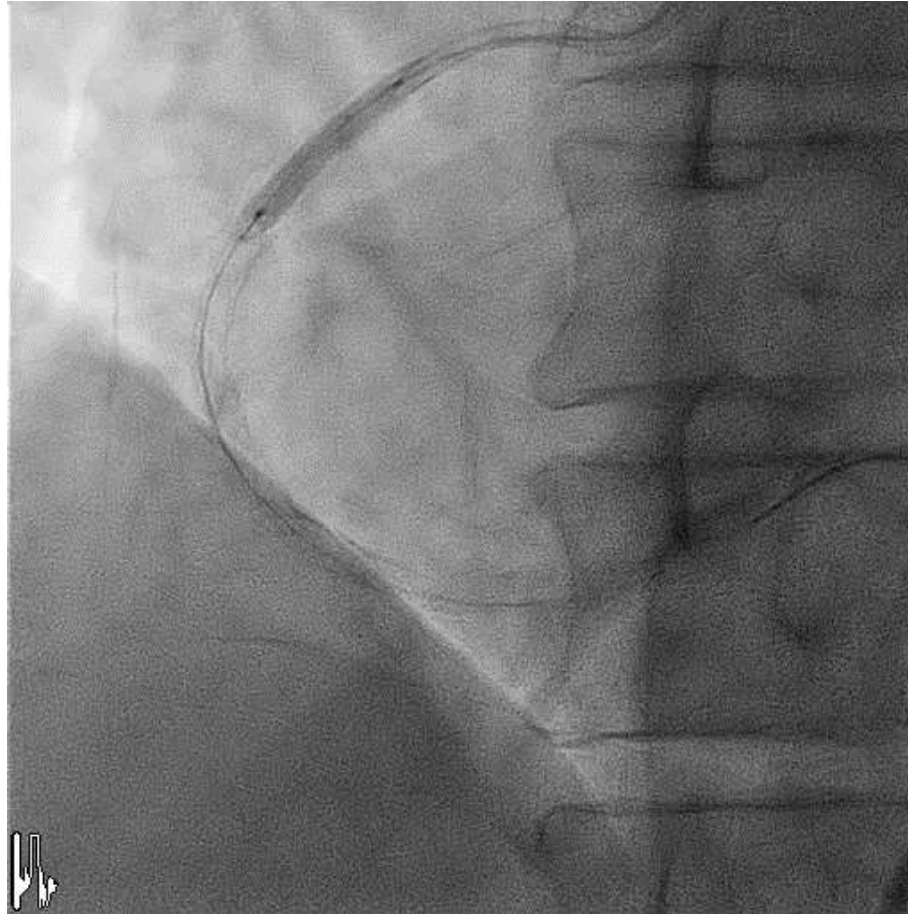
# Coronary stenting



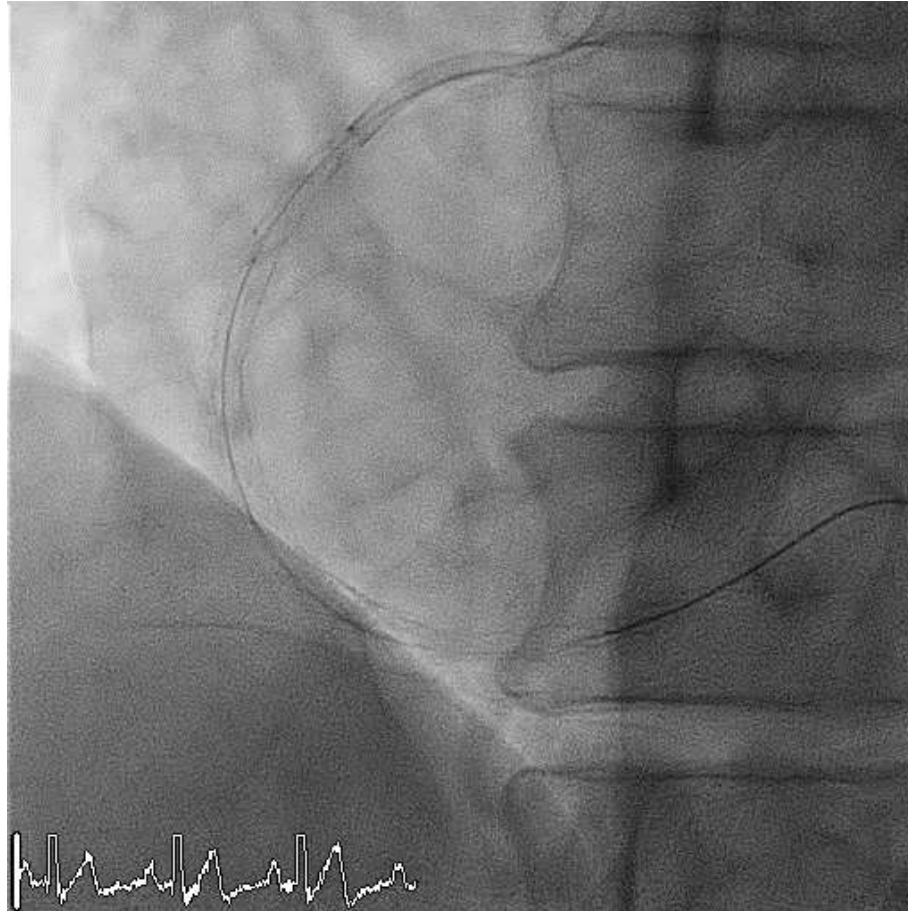
# Coronary stenting (partial stent dislodgement)



# Coronary stenting



# Coronary stenting





# Post-dilatation



# Post-dilatation



# Post-dilatation

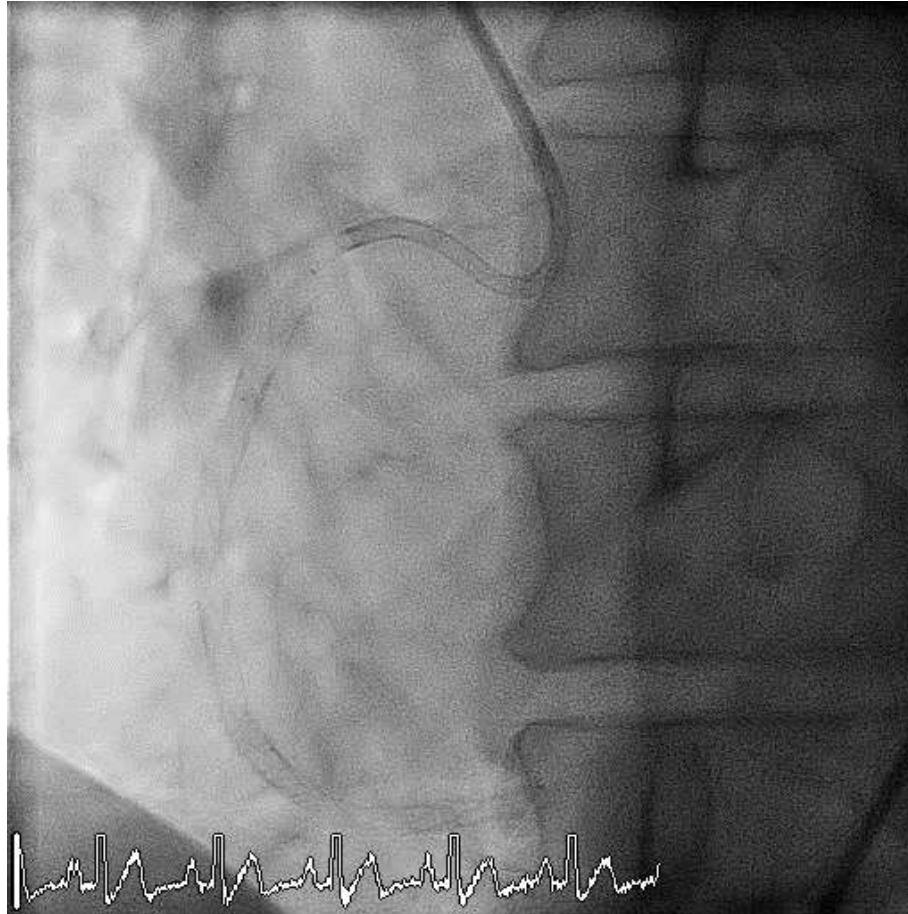


# Post-dilatation

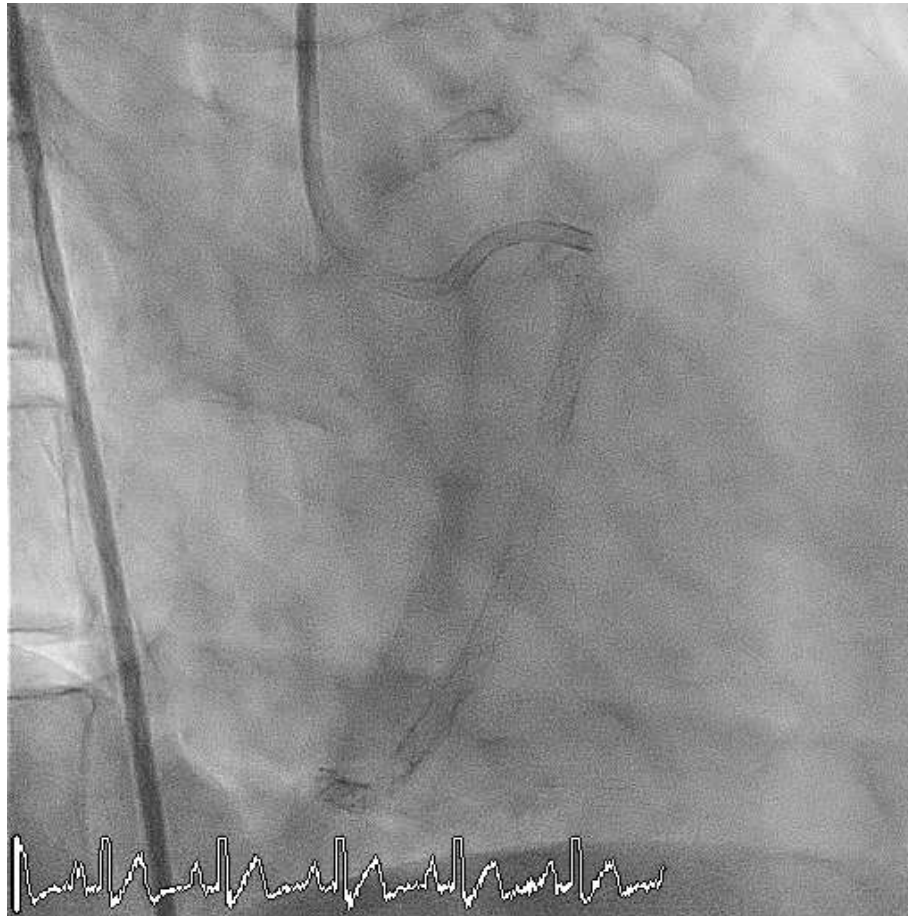




# Final results



# Final results



# Successful Antegrade Percutaneous Coronary Intervention to Right Coronary Artery In-stent Restenosis Chronic Total Occlusion Complicated with Partial Stent Dislodgement

Dr Lee Zhen-Vin  
Clinical Specialist  
Cardiology Unit  
Department of Medicine  
University Malaya Medical Centre  
Malaysia